

Metric Conversions

MM	x	0.03937	=	Inches
Inches	x	25.4	=	MM
Grams	x	0.03527	=	Ounces
Ounces	x	28.349527	=	Grams



Knurling Tools, Form Type – Single Knurl

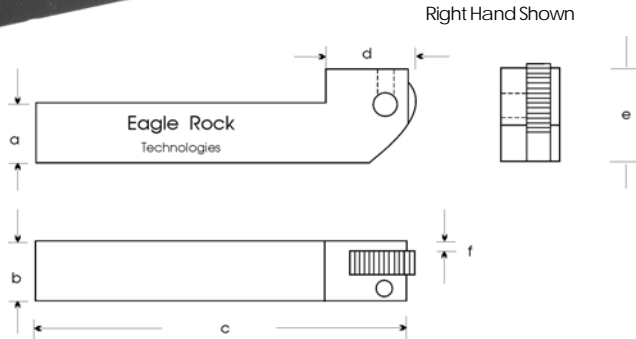
No. K1-29

Bump Type Knurling Tools

With CNC shanks. Available in either Left or Right Hand Shanks. Each holder includes one Medium pitch, Straight [AA] pattern knurl.

Features

- **Machine:** CNC Lathe
- **Knurl Size:** see below
- **Knurl Patterns:** Straight [1 knurl AA] Diamond, Male [1 knurl GV], Diamond, Female [1 knurl GE]
- **Knurls Included:** 1 each Medium pitch, Straight [AA] pattern



11

a	b	c	d	e	f	Knurl Size	Cat. No.
5/16 RH	3/8	5	17/32	1/2	1/16	A - 5/16 x 5/32 x 1/8	K1-29-0312R-A
5/16 LH	3/8	5	17/32	1/2	1/16	A - 5/16 x 5/32 x 1/8	K1-29-0312L-A
3/8 RH	3/8	3	25/32	5/8	1/16	A - 5/16 x 5/32 x 1/8	K1-29-0375R-A
3/8 LH	3/8	3	25/32	5/8	1/16	A - 5/16 x 5/32 x 1/8	K1-29-0375L-A
1/2 RH	1/2	3 1/2	1 1/32	3/4	.100	B - 1/2 x 3/16 x 3/16	K1-29-0500R-B
1/2 LH	1/2	3 1/2	1 1/32	3/4	.100	B - 1/2 x 3/16 x 3/16	K1-29-0500L-B
5/8 RH	5/8	4	15/16	1	.100	C - 5/8 x 1/4 x 1/4	K1-29-0625R-C
5/8 LH	5/8	4	15/16	1	.100	C - 5/8 x 1/4 x 1/4	K1-29-0625L-C
3/4 RH	3/4	4 1/2	1 3/32	1 1/8	1/8	E - 3/4 x 3/8 x 1/4	K1-29-0750R-E
3/4 LH	3/4	4 1/2	1 3/32	1 1/8	1/8	E - 3/4 x 3/8 x 1/4	K1-29-0750L-E
3/4 RH	1	4 1/2	1 3/32	1 1/8	1/4	G - 3/4 x 1/2 x 1/4	K1-29-0750R-G
3/4 LH	1	4 1/2	1 3/32	1 1/8	1/4	G - 3/4 x 1/2 x 1/4	K1-29-0750L-G
1 RH	1	6	1 1/2	1 3/8	1/4	E - 3/4 x 3/8 x 1/4	K1-29-1000R-E
1 LH	1	6	1 1/2	1 3/8	1/4	E - 3/4 x 3/8 x 1/4	K1-29-1000L-E
1 RH	1	6	1 1/2	1 3/8	1/4	K - 1 x 3/8 x 5/16	K1-29-1000R-K
1 LH	1	6	1 1/2	1 3/8	1/4	K - 1 x 3/8 x 5/16	K1-29-1000L-K
1 RH	1 1/4	6	1 1/2	1 1/2	1/4	J - 1 1/4 x 1/2 x 1/2	K1-29-1000R-J
1 LH	1 1/4	6	1 1/2	1 1/2	1/4	J - 1 1/4 x 1/2 x 1/2	K1-29-1000L-J

2010

Metric Conversions

MM x 0.03937 = Inches
 Inches x 25.4 = MM
 Grams x 0.03527 = Ounces
 Ounces x 28.349527 = Grams



Knurling Tools, Form Type – Single Knurl

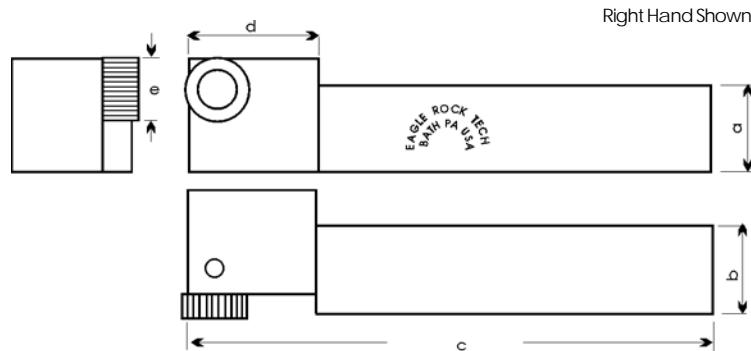
No. K1-29

Bump Type “Up-To-The-Shoulder” Knurling Tool

With CNC Shanks. Uses Counterbored knurls to knurl up to a shoulder. Available in either Left or Right hand shanks. Each holder includes one Medium pitch, Straight pattern [AA] knurl.

Features

- Machine: CNC Lathe
- Knurl Size: see below
- Knurl Patterns: Straight [1 knurl AA] Diamond, Male [1 knurl GV], Diamond, Female [1 knurl GE]
- Knurls Included: 1 each Medium pitch, Straight pattern [AA]



a	b	c	d	e	Knurl Size	Cat. No.
5/16 RH	3/8	5	17/32	1/2	AV - 15x6x6/8	K1-29-0312R-AV
5/16 LH	3/8	5	17/32	1/2	AV - 15x6x6/8	K1-29-0312L-AV
3/8 RH	3/8	3	25/32	5/8	AV - 15x6x6/8	K1-29-0375R-AV
3/8 LH	3/8	3	25/32	5/8	AV - 15x6x6/8	K1-29-0375L-AV
1/2 RH	1/2	3 1/2	1 1/32	3/4	AV - 15x6x6/8	K1-29-0500R-AV
1/2 LH	1/2	3 1/2	1 1/32	3/4	AV - 15x6x6/8	K1-29-0500L-AV
1/2 RH	1/2	3 1/2	1 1/32	3/4	L - 20x8x10/12	K1-29-0500R-L
1/2 LH	1/2	3 1/2	1 1/32	3/4	L - 20x8x10/12	K1-29-0500L-L
5/8 RH	5/8	4	15/16	1	L - 20x8x10/12	K1-29-0625R-L
5/8 LH	5/8	4	15/16	1	L - 20x8x10/12	K1-29-0625L-L
3/4 RH	3/4	4 1/2	1 3/32	1 1/8	L - 20x8x10/12	K1-29-0750R-L
3/4 LH	3/4	4 1/2	1 3/32	1 1/8	L - 20x8x10/12	K1-29-0750L-L
1 RH	1 1/4	6	1 1/2	1 1/2	L - 20x8x10/12	K1-29-1000R-L
1 LH	1 1/4	6	1 1/2	1 1/2	L - 20x8x10/12	K1-29-1000L-L

Metric Conversions

MM	x	0.03937	=	Inches
Inches	x	25.4	=	MM
Grams	x	0.03527	=	Ounces
Ounces	x	28.349527	=	Grams



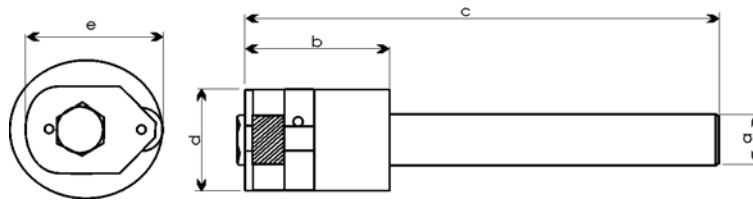
Knurling Tools, Form Type – Single Knurl

No. K1-29
Bump Type Knurling Tools

With Round shanks. For internal and external knurling. Each holder includes one Medium pitch, Straight [AA] pattern knurl.

Features

- **Machine:** CNC Lathe
- **Knurl Size:** see below
- **Knurl Patterns:** Straight [1 knurl AA]
Diamond, Male [1 knurl GV],
Diamond, Female [1 knurl GE]
- **Knurls Included:** 1 Medium pitch,
Straight pattern [AA]



11

a	b	c	d	e	Knurl Size	Cat. No.
1/2"	3	6	1 1/2	2.2	B- 1/2 x 3/16 x 3/16	K1-29-0500D-B
5/8	3	6	1 1/2	2.2	C- 5/8 x 1/4 x 1/4	K1-29-0625D-C
3/4	2	7	1 1/2	2.2	E- 3/4 x 3/8 x 1/4	K1-29-0750D-E
1	2	7	1 1/2	2.2	E- 3/4 x 3/8 x 1/4	K1-29-1000D-E
1 1/4	2	7	1 1/2	2.2	E- 3/4 x 3/8 x 1/4	K1-29-1250D-E
1 1/2	2	7	1 1/2	2.2	E- 3/4 x 3/8 x 1/4	K1-29-1500D-E

2010

Metric Conversions

MM x 0.03937 = Inches
 Inches x 25.4 = MM
 Grams x 0.03527 = Ounces
 Ounces x 28.349527 = Grams

EAGLE ROCK[®]
 TECHNOLOGIES



Knurling Tools, Form Type – Single Knurl

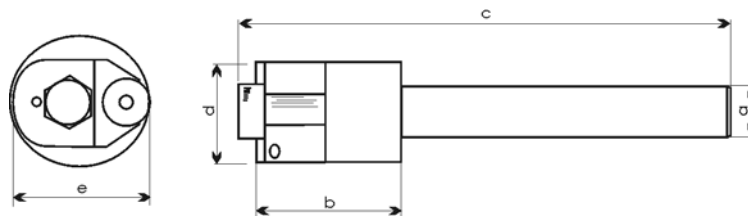
No. K1-29

**Bump Type “Up-To-The-Shoulder”
 Knurling Tools**

With Round shanks. Uses Counterbored knurls to knurl up to a shoulder. For internal and external knurling. Each tool includes one Medium pitch, Straight pattern [AA] knurl.

Features

- **Machine:** CNC Lathe
- **Knurl Size:** L-20x8x10/12
- **Knurl Patterns:** Straight [1 knurl AA] Diamond, Male [1 knurl GV], Diamond, Female [1 knurl GE]
- **Knurls Included:** 1 each Medium pitch, Straight pattern [AA]



11

a	b	c	d	e	Knurl Size	Cat. No.
1/2"	3.0	6.0	1.5	2.2	L- 20x8x10/12	K1-29-0500D-L
5/8"	3.0	6.0	1.5	2.2	L- 20x8x10/12	K1-29-0625D-L
3/4"	2.0	7.0	1.5	2.2	L- 20x8x10/12	K1-29-0750D-L
1"	2.0	7.0	1.5	2.2	L- 20x8x10/12	K1-29-1000D-L
1 1/4"	2.0	6.0	1.5	2.2	L- 20x8x10/12	K1-29-1250D-L
1 1/2"	2.0	6.0	1.5	2.2	L- 20x8x10/12	K1-29-1500D-L