

2010

Metric Conversions

MM x 0.03937 = Inches
 Inches x 25.4 = MM
 Grams x 0.03527 = Ounces
 Ounces x 28.349527 = Grams

EAGLE ROCK[®]
 TECHNOLOGIES



Knurling Tools, Form Type - Double Knurl

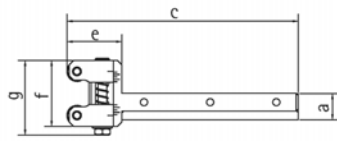
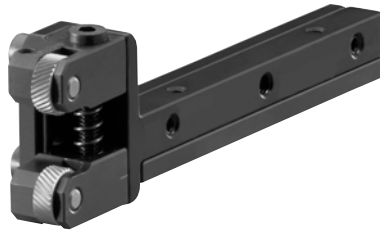
No. K1-852

Clamp Style Knurling Tool

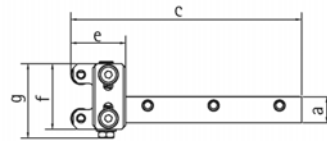
With Modular CNC Shanks. For Straight and Diamond Knurling up to 3/8" (10mm) diameter. Knurling pressure is absorbed by the Holder. One tool adaptable for a variety of shank sizes. Integrated set screws for easy adjustment of the clearance angle. Special surface hardening for increased wear resistance. Available in either Left or Right hand shanks. Holders include carbide pins and one set Medium pitch, Diamond pattern [BL & BR] knurls.

Features

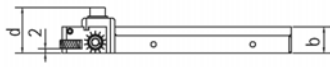
- **Machine:** Small CNC Lathe
- **Capacity:** 1-10 mm [0-3/8"]
- **Knurl Size:** [M] 10x4x4
- **Knurl Patterns:** Straight [2 knurls AA] Diamond, Male [1 knurl BL, 1 knurl BR]
- **Knurls Included:** 1 set Medium pitch, Diamond [BL and BR] pattern



Right



Left



12

| Capacity | a | b | c | d | e | f | g | Knurl Size | Cat. No. |
|----------|----|----|-------|----|------|----|----|------------|---------------|
| 1-10 | 8 | 8 | 105.5 | 21 | 25.5 | 30 | 38 | M-10x4x4 | K1-852-M08L-M |
| 1-10 | 8 | 8 | 105.5 | 21 | 25.5 | 30 | 38 | M-10x4x4 | K1-852-M08R-M |
| 1-10 | 10 | 10 | 105.5 | 21 | 25.5 | 30 | 38 | M-10x4x4 | K1-852-M10L-M |
| 1-10 | 10 | 10 | 105.5 | 21 | 25.5 | 30 | 38 | M-10x4x4 | K1-852-M10R-M |
| 1-10 | 12 | 12 | 105.5 | 21 | 25.5 | 30 | 38 | M-10x4x4 | K1-852-M12L-M |
| 1-10 | 12 | 12 | 105.5 | 21 | 25.5 | 30 | 38 | M-10x4x4 | K1-852-M12R-M |
| 1-10 | 16 | 16 | 105.5 | 21 | 25.5 | 30 | 38 | M-10x4x4 | K1-852-M16L-M |
| 1-10 | 16 | 16 | 105.5 | 21 | 25.5 | 30 | 38 | M-10x4x4 | K1-852-M16R-M |